

**HF Compliant**

REV	DATE	DESCRIPTION	ECN NO.	NAME
1.0	10.09.16	NEW RELEASE		Allen

# 3168 SERIES HDMI FEMALE VERTICAL 10.5H SMT TYPE

**NOTE**

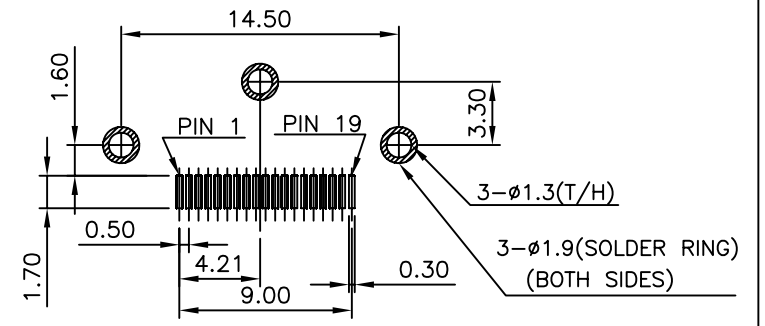
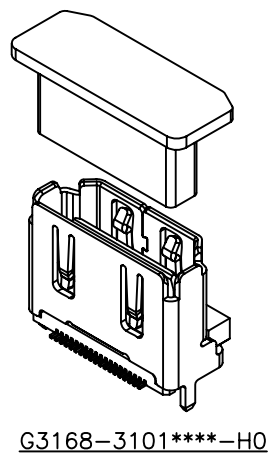
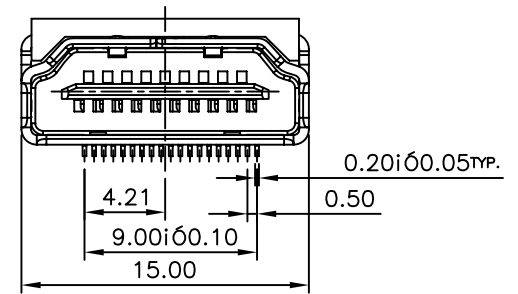
- 1.MATERIAL :  
 HOUSING : THERMOPLASTIC(UL94V-0),BLACK.  
 CAP : THERMOPLASTIC(UL94V-0),BLACK.  
 TERMINAL : COPPER ALLOY.  
 SHELL : COPPER ALLOY.
- 2.PLATED :  
 TERMINAL : SELECTIVE Au PLATED ON CONTACT AREA  
 (ORDER INFORMATION), 100u" Sn PLATED ON SOLDER TAIL  
 AREA , BOTH OVER 50u" Ni UNDERPLATED OVERALL.  
 SHELL : 30~80u" SOLDERABLE Ni OVERALL.

3.ORDER INFORMATION : G3168-31 XX XX XX -H0  
 ① ② ③

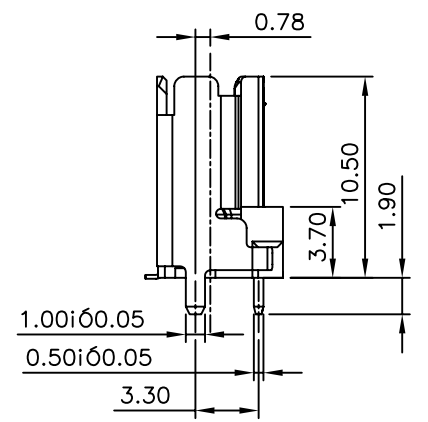
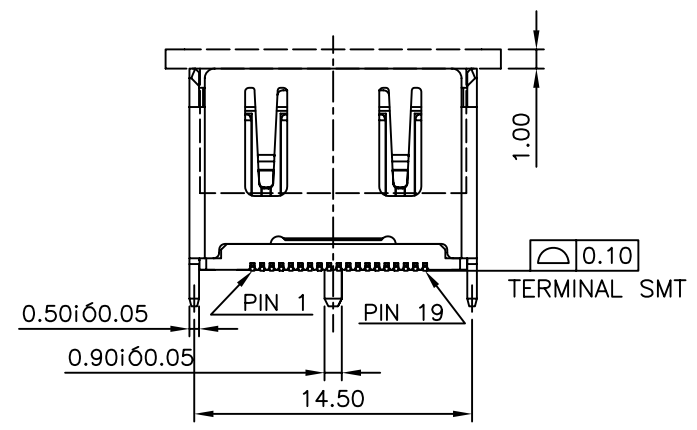
② { 01: W/ CAP  
 02: W/O CAP

① TYPE OPTION { 01 : W/O SCREW  
 02 : W/ SCREW

③ { 01 : Au FLASH ON CONTACT AREA, FLASH  
 02 : 3u" Au ON CONTACT AREA, 3u"  
 03 : 15u" Au ON CONTACT AREA, 15u"  
 04 : 30u" Au ON CONTACT AREA. 30u"



RECOMMENDED PCB LAYOUT (TOP VIEW)  
 TOLERANCE: ±0.05mm



GENERAL TOLERANCE X.X = ±0.20 X.XX = ±0.10 X.X* = ±3°	WIESON TECHNOLOGIES CO., LTD WIESON	PART NO.: G3168-31*****-H0		
	DRAWN BY	Allen Sun (WST)	DRAWING NO.	G3168-31*****-H0
	CHECKED BY	JACK	DRAWING SIZE	2.5 : 1 A4
	APPROVED BY	KEVIN	UNIT	mm
	SORTING NO.	WSC	PAGE	1 OF 2

[ISSUED]

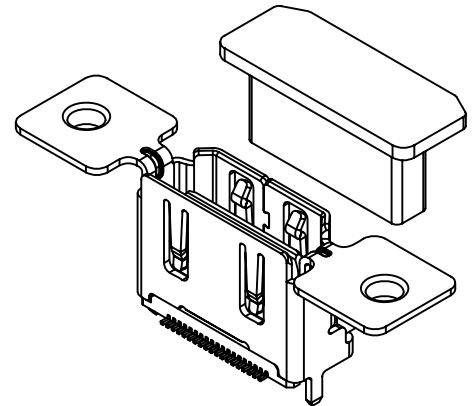
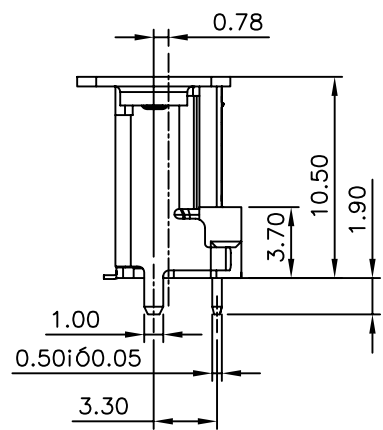
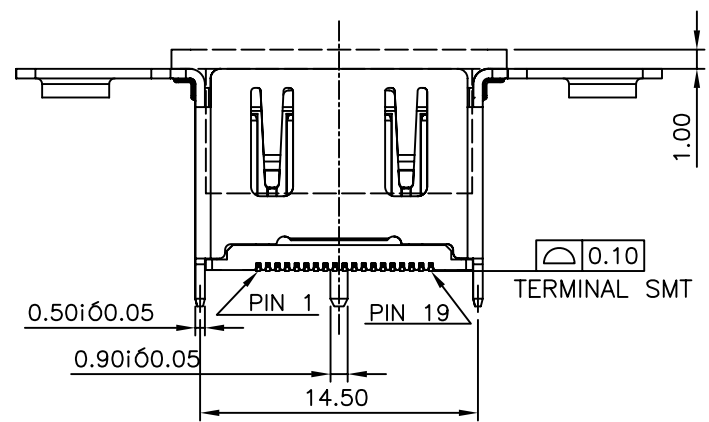
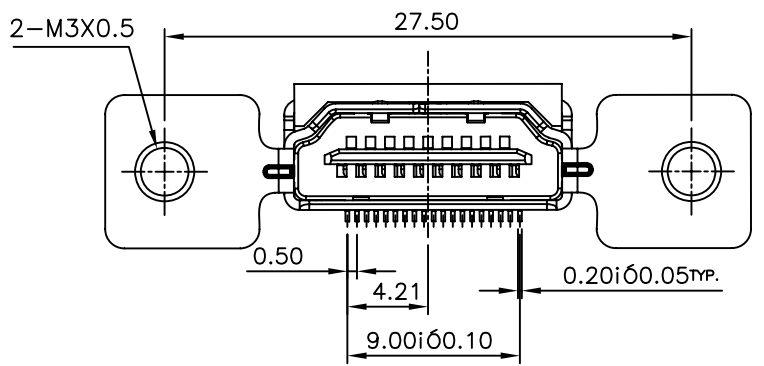
[ARTICLE:044033 V5]

**HF Compliant**

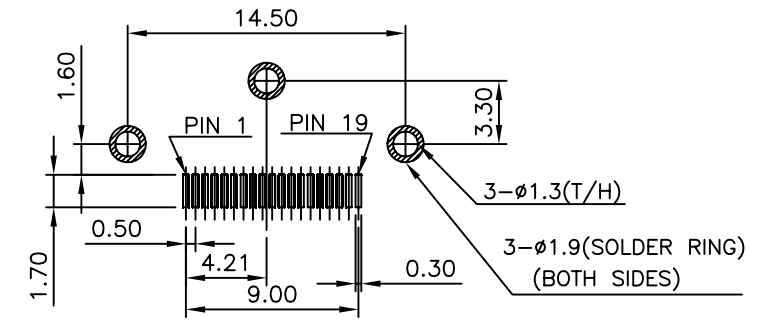
REV	DATE	DESCRIPTION	ECN NO.	NAME
1.0	10.09.16	NEW RELEASE		Allen

3168 SERIES HDMI FEMALE VERTICAL 10.5H SMT TYPE

A  
B  
C  
D  
E



G3168-3102\*\*\*\*-H0



RECOMMENDED PCB LAYOUT (TOP VIEW)  
TOLERANCE: ±0.05mm

<b>GENERAL TOLERANCE</b> X.X = ±0.20 X.XX = ±0.10 X.X* = ±3°	WIESON TECHNOLOGIES CO., LTD WIESON	PART NO.: G3168-31*****-H0		
	DRAWN BY	Allen Sun (WST)	DRAWING NO.	G3168-31*****-H0
	CHECKED BY	JACK	DRAWING SIZE	2.5 : 1 A4
	APPROVED BY	KEVIN	UNIT	mm
	SORTING NO.	WSC	PAGE	2 OF 2

[ISSUED]

[ARTICLE:044033 V5]