



SMD Shielded Dual Inductors - SEP1211EM-A SERIES



PART NUMBERING SYSTEM

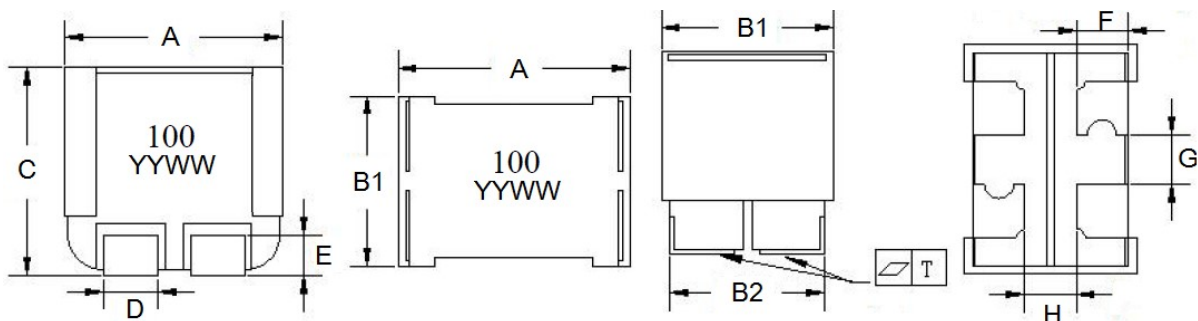
| | | | | | |
|------------|---------------|---|-------------|---|---------------|
| SEP | 1211EM | — | 150M | — | LF — A |
| TYPE | DIMENSIONS | | INDUCTANCE | | AEC-Q200 |

FEATURES :

- Magnetically shielded and low DC resistance.
- Optimal design realizes high quality sound and low distortion.
- Minimizes board space requirements .
- Low coupling for minimal cross-talk between inductors.
- 100% Lead(Pb)-Free and RoHS compliant with High reliability -Reliability test complied to AEC-Q200.

SHAPES AND DIMENSIONS:

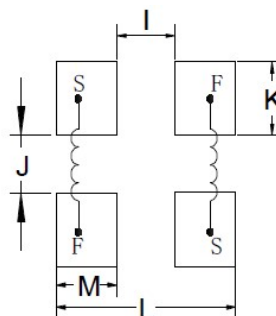
UNIT : mm



A=12.0±0.2 B1=9.6±0.2 B2=8.7±0.25 C=11.3±0.3 D=2.8±0.1 E=2.3±0.3 F=2.5±0.3 G=1.95±0.15 H=3.4Min. T=≤0.15

RECOMMENDED PATTERNS:

UNIT : mm



I=2.9 J=1.5 K= 3.3 L=9.7 M=3.4



SMD Shielded Dual Inductors - SEP1211EM-A SERIES



SPECIFICATION TABLE

| PART NUMBER | INDUCTANCE (μH) | Isat (A) (Typ.) | Irms (A) (Min.) | DCR (mΩ) (Typ.) | DCR (mΩ) (Max.) |
|---------------------|-----------------|-------------------|-------------------|-----------------|-------------------|
| SEP1211EM-R43M-LF-A | 0.43±20% | 38.0 | 27.0 | 1.90 | 2.30 |
| SEP1211EM-5R6M-LF-A | 5.60±20% | 11.0 | 7.50 | 20.0 | 23.0 |
| SEP1211EM-7R5M-LF-A | 7.50±20% | 10.0 | 6.80 | 25.0 | 28.0 |
| SEP1211EM-100M-LF-A | 10.0±20% | 7.40 | 5.60 | 30.5 | 32.6 |
| SEP1211EM-150M-LF-A | 15.0±20% | 5.50 | 4.60 | 43.5 | 45.5 |
| SEP1211EM-220M-LF-A | 22.0±20% | 5.00 | 4.00 | 62.0 | 74.4 |

- Test frequency : Ls : 100KHz /1.0V.
- All test Data is referenced to 25°C ambient.
- Heat Rated Current (Irms) will cause the coil temperature rise approximately ΔT of 40°C
- Typical Saturation DC Current would cause Lo to drop approximately 30%
- Operating temperature -55~+155°C (Including self - temperature rise)